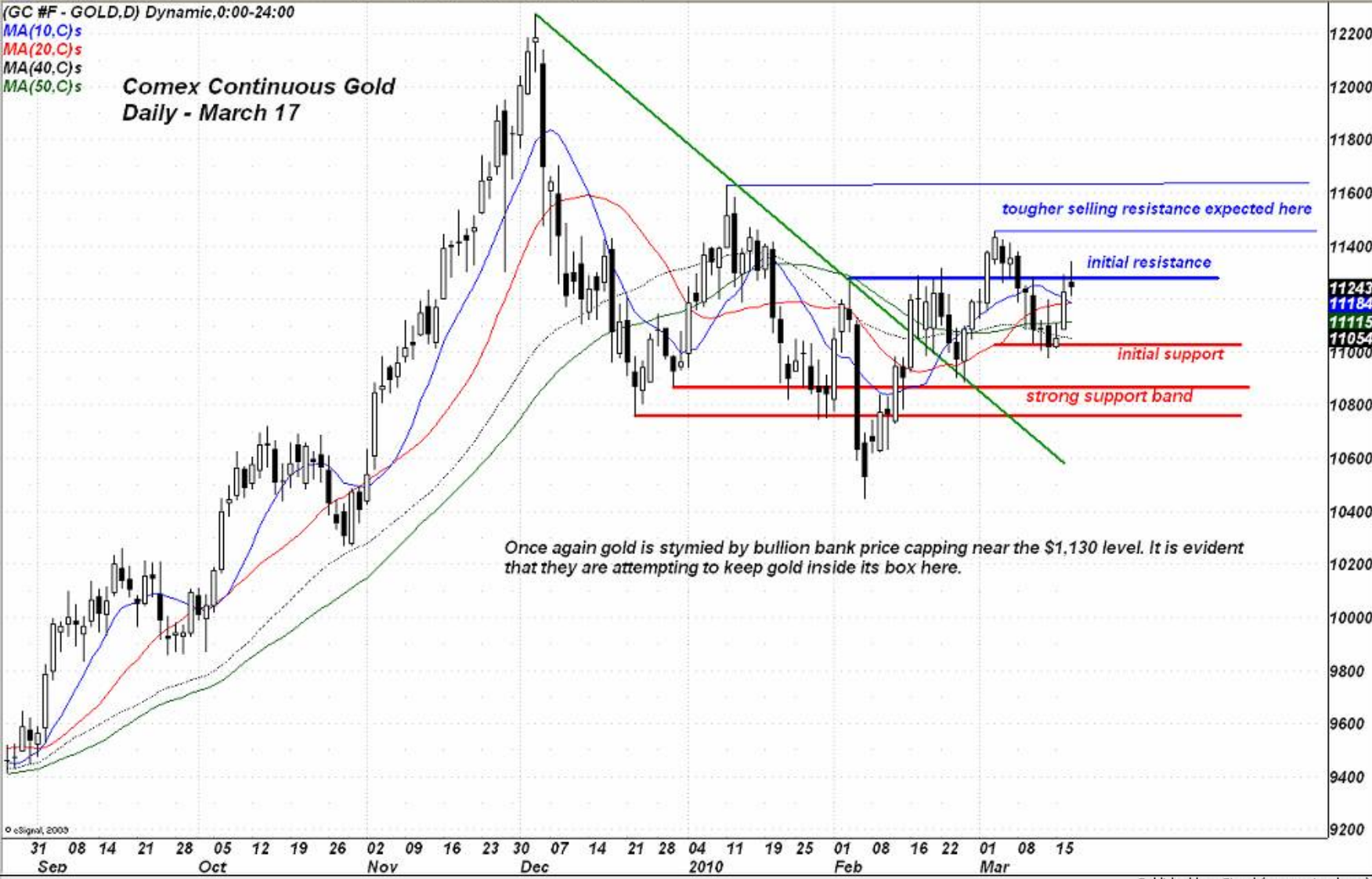


(GC #F - GOLD,D) Dynamic,0:00-24:00

MA(10,C)s
MA(20,C)s
MA(40,C)s
MA(50,C)s

Comex Continuous Gold Daily - March 17



Once again gold is stymied by bullion bank price capping near the \$1,130 level. It is evident that they are attempting to keep gold inside its box here.