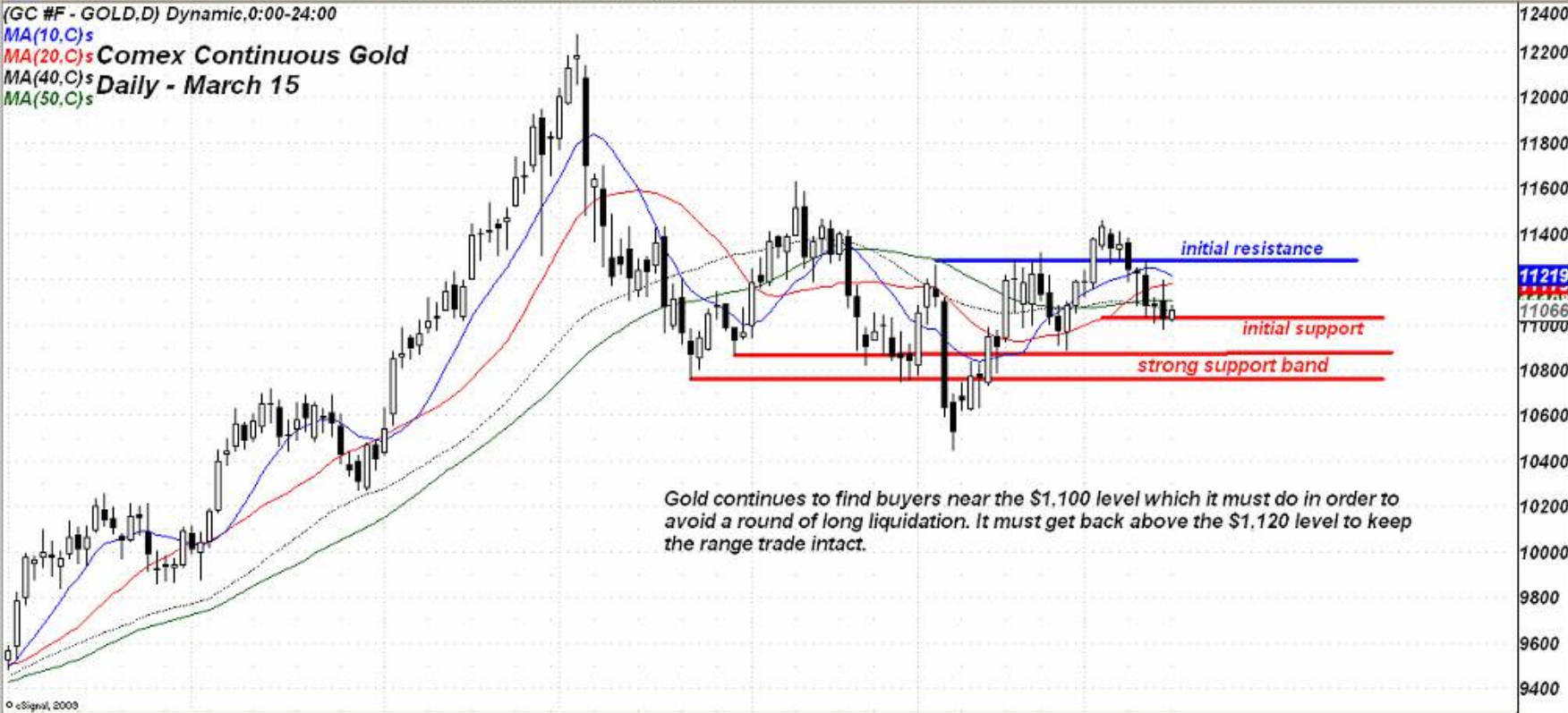


(GC #F - GOLD.D) Dynamic,0:00-24:00  
 MA(10,C)s  
 MA(20,C)s **Comex Continuous Gold**  
 MA(40,C)s **Daily - March 15**  
 MA(50,C)s



Gold continues to find buyers near the \$1,100 level which it must do in order to avoid a round of long liquidation. It must get back above the \$1,120 level to keep the range trade intact.

